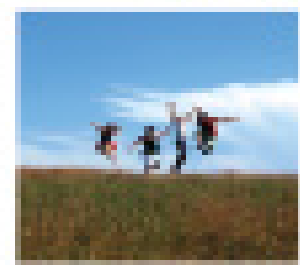
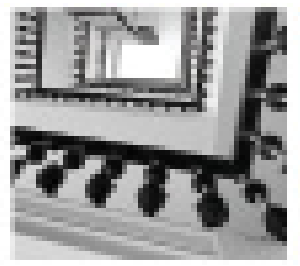
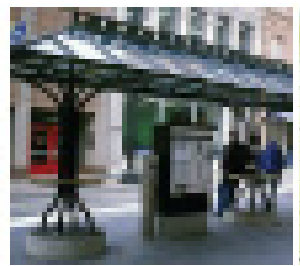
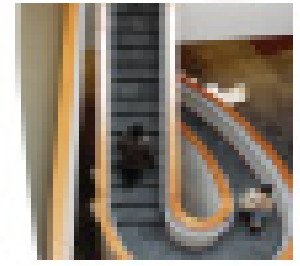
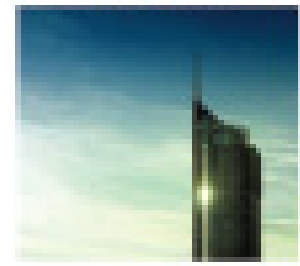
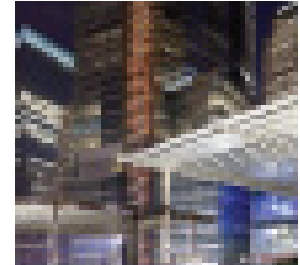


edra  
2012  
**GREAT**  
PLACES  
**AWARDS**

*The Environmental Design Research Association  
14th Annual Great Places Awards*

# Call for Entries

**Deadline: January 27, 2012**



# About the Great Places Awards



## The Program

The EDRA Great Places Awards are unique among programs that recognize professional and scholarly excellence in environmental design. They are distinguished by a close relationship among design, research and practice that engages human experiences. This process creates humane environments achieved by an interdisciplinary approach and concern for human factors in the design of the built environment.

We seek entries of exemplary work, inviting participation from a range of design and research disciplines, recognizing projects whose significance extends beyond any one profession or field. **Projects should show how research and/or citizen participation is linked to or part of practice, demonstrating that an understanding of human interaction with place has generated the design.**

We invite participation from the full breadth of environmental design and related research activities, including architecture, landscape architecture, planning, urban design, interior design, lighting design, graphic design, environmental psychology, sociology, anthropology, geography and the physical sciences.

**All submissions for the 2012 EDRA Great Places Awards must be RECEIVED by Friday, January 27, 2012.** Submissions can be emailed to [headquarters@edra.org](mailto:headquarters@edra.org) or submitted on a CD/DVD and mailed to EDRA Headquarters, Attn: Great Places Awards, 1760 Old Meadow Road, Suite 500, McLean, VA 22012. **Only electronic submissions will be accepted.**

## The Process

Each year we assemble a jury with diverse backgrounds in design, research and practice. The jury evaluates how each project, no matter what the discipline, addresses **the human experience** of well-designed places. Special attention is paid to the transferability of research about human experience of place into design and planning practice. The jury will select winners from four categories: place design, place planning, place research, and a book prize.

The awards jury will convene in early 2012 at the College of Built Environments at the University of Washington in Seattle, Washington, and winners will be presented at the EDRA Awards Banquet during EDRA43 in Seattle on Saturday, June 2, 2012. The winning entries will be on display during the banquet and will be publicized throughout the year.

# About the Great Places Awards



## The Jury

This year's distinguished jurors include: **Richard Haag, FASLA, BCSLA, Hon AIA**, Principal, Richard Haag Associates; **Milenko Matanovic**, Executive Director, Pomegranate Center; **Julie Parrett, RLA**, Lecturer, Landscape Architecture, University of Washington; **Michael Pyatok, FAIA**, Principal, Pyatok Architects; and **Sharon E. Sutton, PhD, FAIA**, Professor of Architecture and Urban Design, University of Washington.

## The People

The **Environmental Design Research Association** (EDRA) is a global interdisciplinary community of research and design professionals, educators, and students. EDRA focuses on the links between people and their built and natural environments.



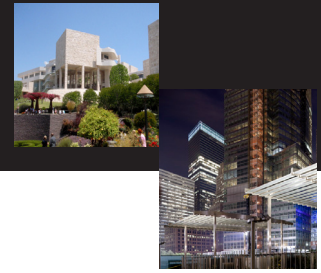
Founded in 1969, EDRA's roots are strong and flourishing. Our organization's vibrant network of visionaries have anticipated movements in research and design decades before they have hit the mainstream. EDRA's lineage of members have pioneered environment & behavior studies, evidence-based design, facility evaluation methods, sustainability, active living community planning, universal design, diversity in design, workplace design and informatics, and digital technologies.

EDRA's membership boasts many venerable and leading edge design researchers and practitioners. Their work, in conjunction with major universities and organizations, is reshaping diverse environments and government policies on national and global scales. At EDRA, researchers and practitioners work together to create places where people thrive.

## The Partner

EDRA is proud of its continued partnership with *Places Journal* in the EDRA Great Places Awards. As a media partner of the 2012 program, this publication helps further recognize excellence in environmental design.





## Place Design

Any design project completed within the last five years (but long enough to assess how well it functions for its users) can be entered. Projects can consist of individual structures, spaces or elements, or groups that work together as a unit. They can involve the design of something new or the reuse of existing resources. The scale may be large or small. Each project should account for its relation to the larger environment of which it is a part and demonstrate how it responds to user needs.

## Place Planning

Any plan that makes proposals for the future use, management or design of a place can be entered — including master plans, specific plans or parts of plans, management plans, vision documents, or charrette proposals. Plans must have been sponsored by an organized entity (such as a public agency, community group, private business or institution), though they need not have received official approval.

## Place Research

All types of research about the design and use of places can be entered, including (but not limited to) projects that document the form or perception of places or landscapes; employ evaluations of the use or management of recent projects or established settings; or are based upon history or research on sustainable practices.

## Book Award

Any book published in the last two years advancing the critical understanding of place or design of exceptional environments can be entered. The book may be primarily scholarly, practical, literary or visual. However, it must be currently available to the public through bookstores, commercial websites, or direct purchase from a publisher. Books may not be self-published. They must have been published for the first time in the last two years. They may not be re-edited or be re-released versions of older works.

## Entry Deadline

All submissions must be received by Friday, January 27, 2012.



## What kinds of designs qualify?

Nominations can consist of an individual built element, or groups of environments that work together as a unit. They can involve the design of something new or the reuse of existing resources. Projects can be of any scale, from a local street to a civic boulevard, a community park to a regional greenway, a room to a cluster of buildings and spaces. Projects must have been completed within the last five years, but long enough ago to assess how well they function for inhabitants and/or users.

## What issues do the jury consider?

Places must be recognizable as distinct within a larger fabric of relationships—they should help improve their setting by advancing a larger plan, repair an unsatisfactory relationship, or add something that a previous design failed to provide. Submissions should involve a place that is meaningful to a community, consider an issue of social importance, or demonstrate how the design is configured to serve a broader constituency and provide enduring benefits. Submissions should address the relationship between design research on human needs, perceptions, and/or between design processes that may incorporate citizen participation and design outcomes. **Failure to explicitly address the submission requirements outlined below in the written project statement may disqualify an entry.**

## Submission requirements

Please submit a written statement of no more than 500 words addressing each of the questions below. Entries must also include a PDF document of no more than 20 pages in length and 10mb in file size that provides illustrations of the project and which substantiates points made in the written statement. **File sizes larger than 10mb will not be included in the jurying process.**

1. Describe the place and its surroundings, the design process and the outcome.
2. How does this specific project contribute to the ongoing transformation of a larger fabric of places?
3. What research or other evidence is there that this place is important to its inhabitants or users, or that the project has broadened or strengthened the constituency for this place?
4. What issues of social importance does the project consider?
5. What research was useful in designing this project, would be pertinent in evaluating it, or would help make future projects even more successful?
6. What research and/or design process was employed that gave voice to people who inhabit the setting?



## What kinds of plans qualify?

Any plan that makes proposals for the future use, management or design of a place can be nominated—including master plans, specific plans or elements, management plans, vision documents or charrette proposals. Plans can operate at a range of scales, from a specific area, such as a cluster of buildings, a campus or neighborhood, to a region. They can consider a variety of issues, such as urban design, preservation, environmental management, transportation and accessibility, community development, facilities programming, and community visioning. Plans must have been sponsored by an organized entity—such as a public agency, community group, or private business or institution. Plans should be available for public review, but they need not have received official approval.

## What issues do the jury consider?

Plans should address how specific places or activities operate within a larger fabric of spatial, functional and cultural relationships. Plans should involve places of public or social significance, consider issues of social importance, or be configured to expand the constituency for a place. Plans should indicate clear methods/process. They should have effective strategies for participation and communication of stakeholders, involving affected constituencies in formulating the plan and conveying the plan's significance to those whose involvement and commitment will be necessary. Even if the plan goals have not yet been realized, the planning process should have demonstrable outcomes that indicate progress towards achieving the stated outcomes. They should result in specific design, management or policy initiatives; broaden or strengthen the constituency for the place; attract additional resources to the place; or shift the discussion about or perception of the place. The emphasis of an entry should be to clearly describe the process that led to the plan. **Failure to explicitly address the submission requirements outlined below in the written project statement may disqualify an entry.**

## Submission requirements

Please submit a written statement of no more than 500 words addressing each of the questions below. Entries must also include a PDF document of no more than 20 pages in length and 10mb in file size that provides illustrations of the project and which substantiates points made in the written statement. **File sizes larger than 10mb will not be included in the jurying process.**

1. Please describe the following aspects of the plan: the place involved; the client for and/or sponsor of the plan; the planning methods and process, including the time frame in which the planning took place; strategies for involving stakeholders in forming the plan; strategies for helping stakeholders, policy makers and funders understand the significance of the proposals; and proposals for implementation.
2. What impact has the plan had? What changes have come about as a result of the planning process?
3. What research was useful in creating this plan, would be pertinent in evaluating it, or would help make future plans of this sort even more effective?



## What kinds of research qualify?

All types of research about the design and use of places can be nominated—including (but not limited to) projects that document the form or perception of places or landscapes; employ evaluations of the use or management of recent projects or established settings; or are based upon history or research on sustainable practices.

## What issues do the jury consider?

Research projects should consider the relationship between physical form and human activity or experience. They should enrich our understanding of how people interact with places from a behavioral, social, cultural or ecological perspective; how people experience places; or processes through which places are designed, occupied and managed. Projects should consider places of public or social importance— such as streets, parks and squares; campuses, religious or commercial facilities; or offices, special housing facilities or extended development patterns. Projects should demonstrate innovation and describe how new ground has been broken. Projects should have broad applicability, informing design practice or teaching. The research methods, findings and implications should be clearly documented and communicated. Projects should be clearly grounded in the context of recent literature and practice; they can revisit previous research, confirming, extending or challenging earlier findings. **Failure to explicitly address the submission requirements outlined below in the written project statement may disqualify an entry.**

## Submission requirements

Please submit a written statement of no more than 500 words addressing each of the questions below. Entries must also include a PDF document of no more than 20 pages in length and 10mb in file size that provides illustrations of the project and which substantiates points made in the written statement. **File sizes larger than 10mb will not be included in the jurying process.**

1. Describe the place involved and the client for the study.
2. Describe the research question, methods and findings.
3. Explain how the project relates to recent literature and practice.
4. How does this research address our understanding of human interaction with or experience of the physical environment?  
What new knowledge/understanding does it advance?
5. What issues and places of social importance does this research consider?
6. How can the research findings be used in designing places or teaching about place?



## What kinds of books qualify?

Any book published in the last two years advancing the critical understanding of place or design of exceptional environments can be entered. The book may be primarily scholarly, practical, literary or visual. However, it must be currently available to the public through bookstores, commercial websites, or direct purchase from a publisher. Books may not be self-published. They must have been published for the first time in the last two years. They may not be re-edited or be re-released versions of older works.

## What issues do the jury consider?

Books should be primarily about the experience, design or understanding of place. They may be analytic, descriptive, or practice oriented. They may be about particular places or about the qualities of place as a general category of study. They may be edited volumes or individually authored works. However, they must demonstrate the mature realization of a stated research agenda, with findings that may be applied in practice, and they must engage with and contribute to existing themes in the literature on place. **Failure to explicitly address the submission requirements outlined below in the written projects statement, may disqualify an entry.**

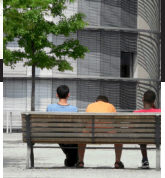
## Submission requirements

Please submit a written statement of no more than 500 words addressing each of the questions below. Entries must also include a PDF document of no more than 20 pages in length and 10mb in file size that provides illustrations of the project and which substantiates points made in the written statement. **File sizes larger than 10mb will not be included in the jurying process.** In this category, please also supply a PDF or CD/DVD of the book, or an electronic link to where the book can be viewed (file size limit does not apply to the actual book submission).\*

1. Describe the theme of the book, its research premises, and the circumstances under which it was written and produced.
2. Describe the questions, research methods and findings behind the book and how it relates to recent literature and practice.
3. Why is this book significant? How does it address our understanding of human interaction with or experience of the physical environment?
4. What issues and places of social importance does the book consider?
5. How can the book be used in designing places or teaching about place?

\* *Submitters need to be able to make a physical copy of the book available upon request.*

# Rules for Submission



1. Each entry must follow the specific submission requirements for its category, as described previously, and must be submitted in English. Failure to address all of the questions in the written statement may disqualify an entry.
2. Entries must be submitted electronically to EDRA Headquarters at [headquarters@edra.org](mailto:headquarters@edra.org) or on CD/ DVD which contains the written statement and supplemental materials PDF of no more than 20 pages in length and 10mb in file size. Any material not submitted electronically will not be included in the review process.
3. **All submissions must be RECEIVED (not postmarked) by EDRA Headquarters no later than January 27, 2012.**
4. Each submission must be accompanied by the official entry form on page 10. Reproductions of the form are acceptable.
5. Entrants are encouraged to submit any additional materials (documents, drawings, slides, letters of support, articles and reviews) they feel necessary to explain the project fully. These materials must be submitted electronically via email to [headquarters@edra.org](mailto:headquarters@edra.org) or on a CD/DVD as part of the aforementioned PDF document no more than 20 pages in length and 10mb in file size. If books are submitted, you must also supply an electronic copy of the book in addition to the supporting documents\*.
6. Submissions must be accompanied by the appropriate entry fee: EDRA Members \$135/Non-Members \$150. In order to receive the EDRA member entry fee, submitters must be an active member of EDRA. Submitters wishing to join EDRA to receive the discounted entry fee must also enclose payment for membership with the entry form. Membership types and fees can be found on the entry form. For additional membership information, please visit [www.edra.org](http://www.edra.org).
7. To maintain anonymity in judging, no names of entrants or collaborating parties may appear on any part of the submissions except on the entry form\*\*. Do not conceal the location or identity of projects. Provide all project credits in a separate electronic file entitled "Credits".
8. Jurors reserve the right to transfer an entry from the category in which it was entered to a more appropriate category.
9. All awards will be presented at the EDRA Awards Banquet on June 2, 2012, held in conjunction with EDRA's annual conference, EDRA43, in Seattle, WA. Winners are strongly encouraged to attend the award ceremony.
10. Nominators of winning entries agree to make available further information and graphic material as requested.
11. Drawings, photographs and other materials submitted for winning projects will be used for unrestricted publicity. Each entrant must clear all drawings, photographs and slides included in submission for reuse and reproduction by EDRA. Entrants are responsible for any royalties or copyright fees.

\* *Book submitters need to be able to make a physical copy of the book available upon request.*

\*\* *This requirement does not pertain to the book category.*

# 2012 EDRA Great Places Awards Entry Form



Name of Project \_\_\_\_\_  
Signature of Nominator\* \_\_\_\_\_  
Name of Nominator \_\_\_\_\_  
Organization/Firm/School \_\_\_\_\_  
Address \_\_\_\_\_  
City, State, ZIP \_\_\_\_\_  
Telephone \_\_\_\_\_ Email \_\_\_\_\_

\*Nominators may be participants or authors of the project that is submitted.

Type of Submission (please check one):

Place Design Award Entry  Place Planning Award Entry  Place Research Entry  Book Award Entry

**An entry fee of \$135 members/\$150 non-members is required for each submission and must be submitted with the entry form.** Please indicate status:  EDRA Member  Non-Member

Yes, I would like to join EDRA, and support research to improve the understanding of the relationships between people and their environments. (Please indicate membership type below.)

Individual Member (\$175/year)  Student/Emeritus Member (\$75/year)  
 Wayfinder Member (\$300/year)  Placemaker Member (\$500/year)  
 Nonprofit/Institution Organizational Member (\$600/year)  Corporate Organizational Member (\$1000/year)

Total enclosed: \$ \_\_\_\_\_ (please make checks payable to the Environmental Design Research Association)

For payment via credit card: Credit Card Number \_\_\_\_\_ Exp. Date \_\_\_\_\_

Name as it appears on the card: \_\_\_\_\_

Signature of cardholder: \_\_\_\_\_

**All entries must be submitted electronically via email to [headquarters@edra.org](mailto:headquarters@edra.org) or on a CD/DVD and received by EDRA Headquarters by January 27, 2012. Emailed submissions will not be processed until payment has been received.**

Mailed payments and CD/DVDs can be sent to: Environmental Design Research Association, Attn: Great Places Awards, 1760 Old Meadow Road, Suite 500, McLean, VA 22102.

For further information, please contact EDRA at 703.506.2895 or [headquarters@edra.org](mailto:headquarters@edra.org).